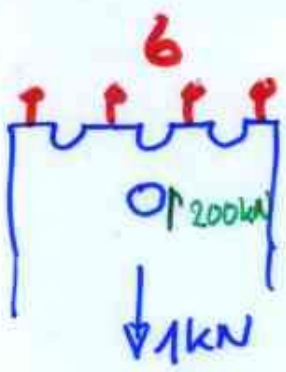
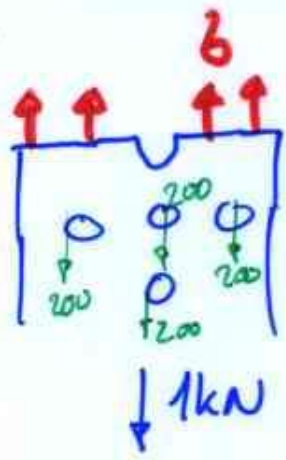


B/



$$\delta = \frac{800 \text{ N}}{\underbrace{(50 \text{ mm} - (3)(4 \text{ mm}))}_{(0.038)} \underbrace{(5 \text{ mm})}_{(0.005)}} = 4.2 \text{ MPa}$$

C/



$$\delta = \frac{(1000 - 4(200))}{(0.046)(0.005)} = \cancel{0.9 \text{ MPa}} \quad 1.09 \text{ MPa}$$